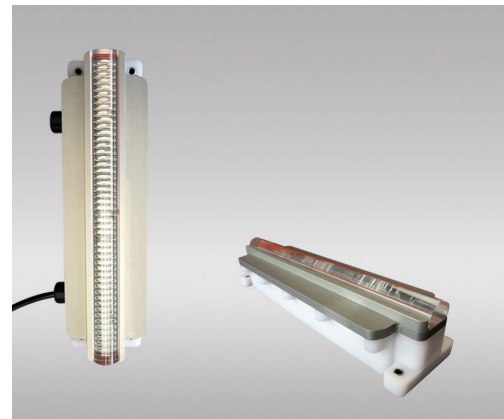




The VLL-43 includes an acrylic lens to capture and project the light from the high-powered LEDs. The LEDs are precisely graded and placed to produce a light beam with minimum variation in intensity.

- Vertical divergence: 30°
- Horizontal divergence: 8.5° at 50% and 15° at 10% of the peak intensity
- It is possible to use multiple units to achieve the required range
- Easy programming with TVIR programmer
- Colours meet IALA chromacity requirements
- Automatic Schmidt-Clausen intensity correction
- Up to 15 effective intensity settings
- Programmable flash characters: 246 + 1 custom
- 20 factory set custom characters
- Separate intensity settings for day and night.
- 9 night/day transition settings



Options

- GPS sync system using the Vega VSU-29 unit
- Monitoring system with Mini VegaWeb unit or using the alarm/monitor connector

Colour	Red	Green	White	Yellow	Blue
Max Effective Intensity (Cd)	1390	2360	2360	959	496
Range (NM)	10	11.1	11.1	9.3	8



Housing	Anodised marine grade aluminium heatsink & high impact ASA plastic
Lens	Optical grade acrylic
Weight	1.3kg
Mounting	4 holes on Ø6mm
Design life	10 years



Specification subject to change or variation without notice - Sept. 2015



GISMAN is the authorized distributor for VEGA products in many countries. For further details, please contact us.