



TWOF

INSET TAXIWAY EDGE LIGHT



COMPLIANCES

ICAO: Annex 14 - Volume I par. 5.3.18.8

FAA: L-852E-T AC150/5345-46

IEC: TS 61827

NATO: STANAG 3316

CAA: CAP 168

IAAE: TP312

APPLICATIONS

Taxiway edge for ICAO, FAA and military taxiways
FAA taxiway intersections

BENEFITS

- 1500 hours lamp rated life at full intensity, but over 3000 hours in field operating conditions
- Significant energy saving and stable chromaticity thanks to the use of dichroic filters
- Designed and manufactured with simplicity and easy to maintain
- No use of sealant to fix the lens in the dome thanks to customized gasket, making its replacement quick and easy
- No optical adjustment after lamp, filter or lens replacement
- Valve for watertightness test after overhaul
- Dome temperature less than 160°C at 6.6A

PERFORMANCES

- 6.35 mm protrusion strongly reduces vibrations to aircrafts and to light itself, increasing its lifetime
- Omnidirectional, 8" or 12" dia.
- Drop-forged dome and cast aluminium lower cover make the fitting sturdy, but lightweight too for ease handling in the field
- Light output not affected by heavy rainfall thanks to the flat surface of the dome
- O-Ring placed outside the dome to avoid dirt deposits between light and base
- Protection degree: IP67
- Temperature range: -55°C to +55°C

INSTALLATION

- Suitable for 8" or 12" dia. Bases
- Adaptor ring for 8" light installation on 12" bases
- Specific tools available for easy and precise installation

PHOTOMETRIC PERFORMANCES

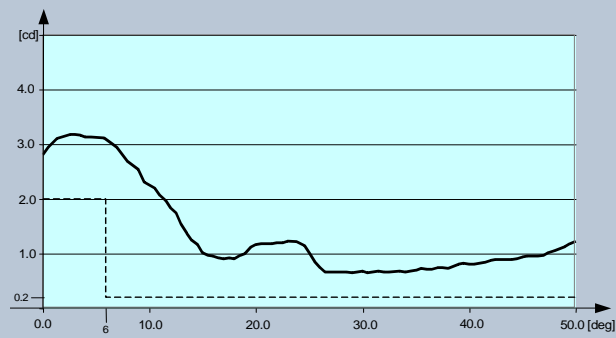


Fig. 1 ICAO par. 5.3.17.8 and FAA L-852T – Blue

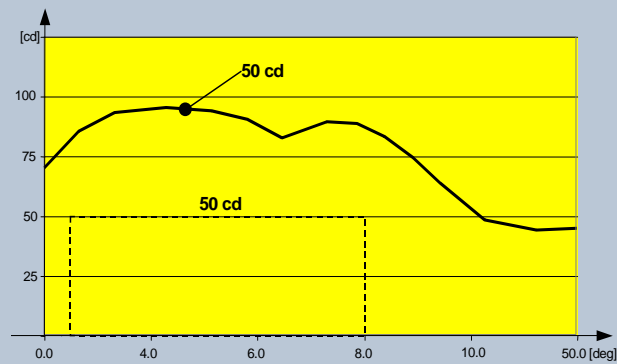
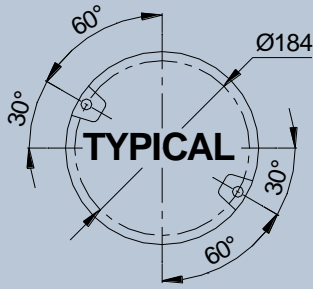
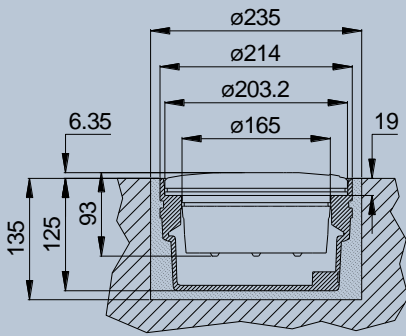


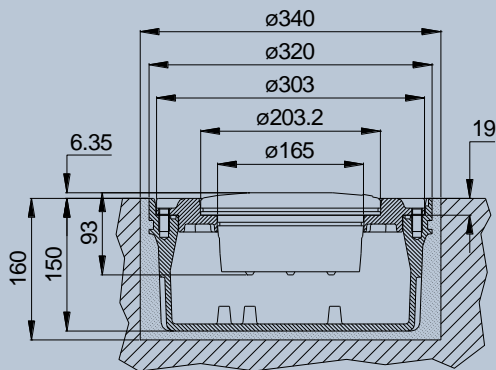
Fig. 2 FAA L-852E – Yellow



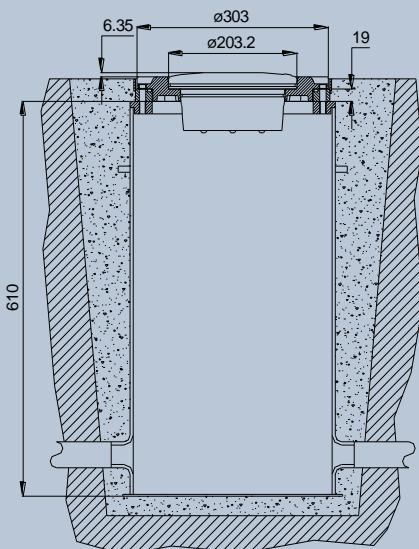
Light Fixture 8" dia.



Shallow Base 8" dia.



Shallow Base 12" dia.



L-868 Deep Base 12" dia.

TWOF- 127 - F - B - 045 - O - F

Basic P/N: _____

Bolt Circle Diameter Code: _____

Not required for 8" dia. Fixture
Suitable for 8" Shallow Base
and 8" L-868B Deep Base
127 = Suitable for 12" L-867B Deep Base
128 = Suitable for 12" Shallow Base
and 12" L-868B Deep Base

Compliance: _____

I = ICAO
S = STANAG
F = FAA

Colour: _____

B = Blue
Y = Yellow

Lamp: _____

045 = 1x48W 6.6A with reflector

Mounting Assembly: _____

O = No Mounting Assembly
R = Adaptor Ring 8"-12" dia.

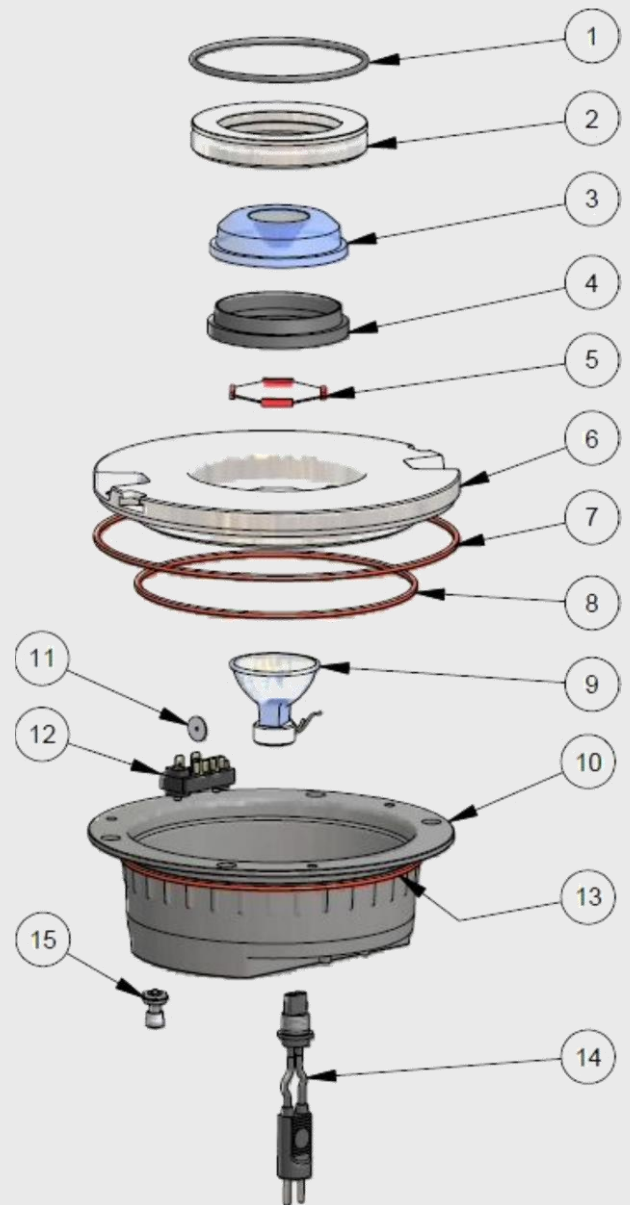
Options: _____

F = Fuse Cutouts

RENEWAL PARTS FOR LIGHT UNIT

- 1 O-Ring for lens holder
- 2 Aluminium lens holder
- 3 Lens
- 4 Lens gasket
- 5 Filter
- 6 Dome with lens and gaskets
- 7 O-Ring for dome
- 8 O-Ring for lower cover
- 9 Lamp
- 10 Lower cover with plug and valve
- 11 Fuse cutout
- 12 Insulated strip with hardware
- 13 O-Ring for base
- 14 FAA L-823 plug
- 15 Valve for watertightness test

Refer to the relevant technical manual for the complete list of the available spare parts

**ACCESSORIES**

- 315.1228 Base L-867, Class IA, size B, 24" Deep
 315.1230 Base L-868, Class IA, Size B, 24" Deep*
 315.1420 Flange ring with pavement dam for L-868 base, Size B, with O-Ring and bolts
 152.5251 Shallow base 8" dia., one cable lead, with hardware
 152.8110 Shallow base, 12" dia., one cable lead, with gasket and hardware
 152.6116 Adaptor Ring 8"-12" dia. complete with hardware
 712.1034 Setting material for shallow base, 10 lt
 712.1035 Quartz for shallow base, 25 kg
 332.4301 Positioning jig for 8"-12" dia. shallow base without optical device
 332.4140 Lifting tool (2 pieces to work properly)

* Sectional bases may be required depending upon the paving technique

For any information about isolating transformers and connectors, please see the specific catalogue pages

TWO 8" dia. Shipping Weights and Volumes			
	Light Unit	Base	Light Unit & Adaptor Ring
Weight (kg)	2.9	3.2	6.05
Volume (m ³)	0.007	0.007	0.013
TWO 12" dia. Shipping Weights and Volumes			
	Light Unit	Base	
Weight (kg)	6.5	7.3	
Volume (m ³)	0.022	0.022	